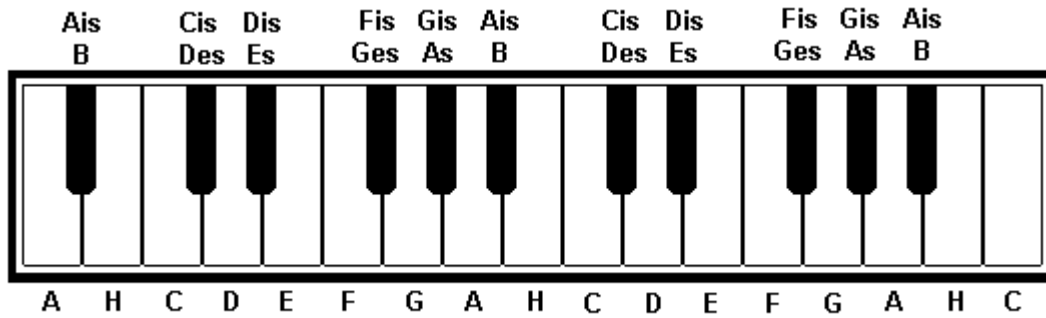


Die Stammtönereihe / C-Dur-Tonleiter

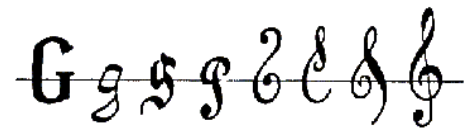
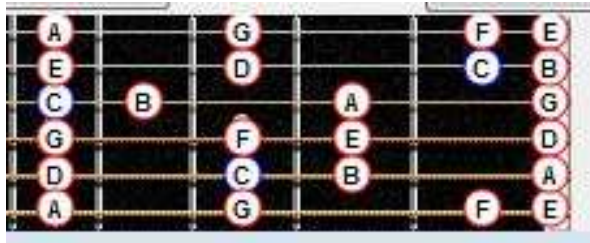


A B C D E F G

Halbtöne:

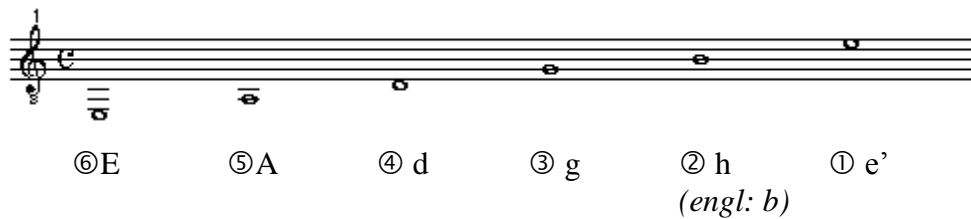


Griffbrett-Übersicht (engl. Nomenklatur):



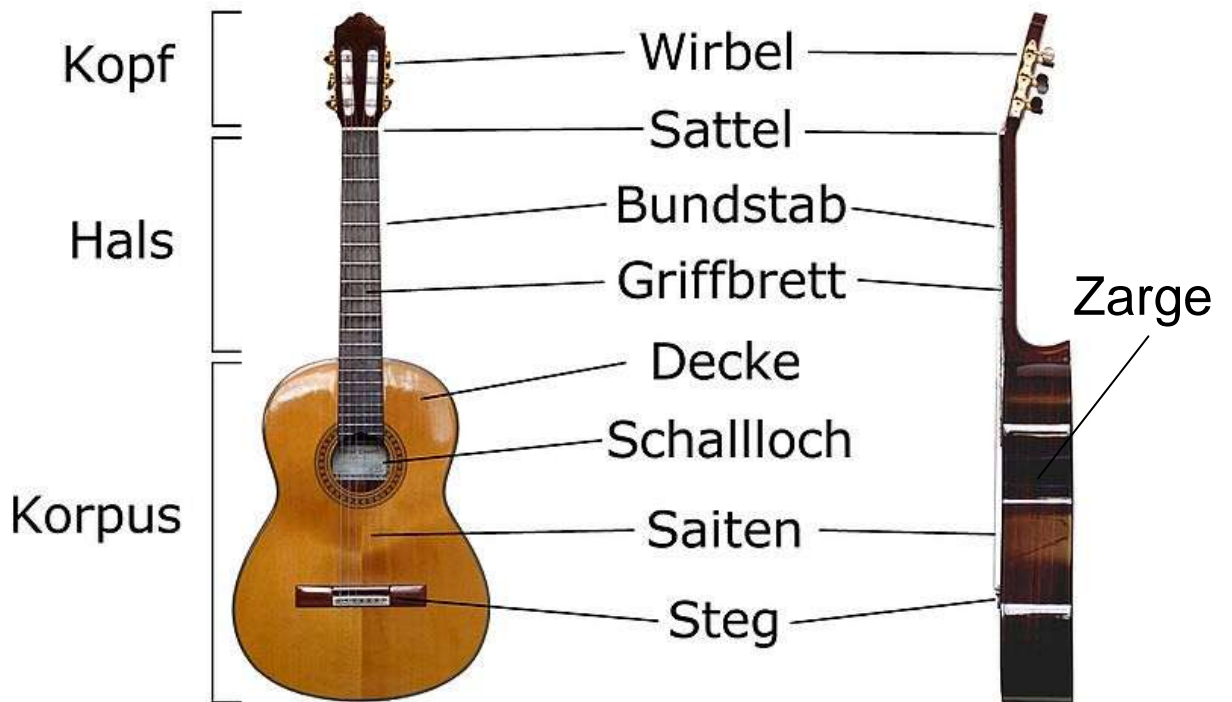
Entwicklung des Violinschlüssels aus dem Buchstaben G

Merksprüche für die Standardstimmung:



- Ein Anfänger Der Gitarre Hat Eifer (alternativ „Braucht“)
- Eine Alte Dame Geht Heringe Essen/Einkaufen (alternativ „Brötchen“)
- Eine Alte Deutsche Gitarre Hält Ewig
- Eine Alte Dumme Gans Holt Eier (alternativ „Besitzt“)

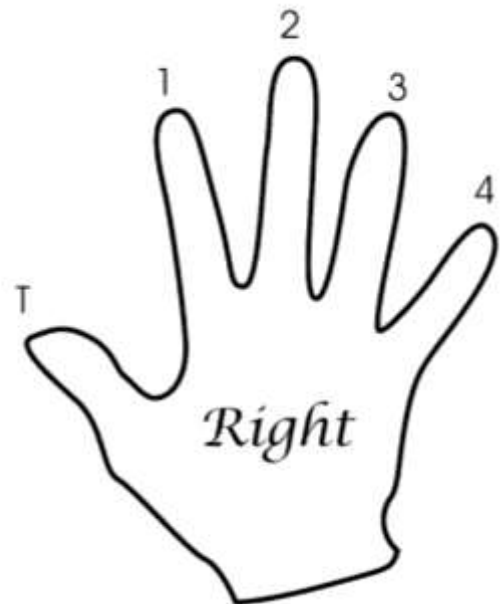
<http://de.wikipedia.org/wiki/Gitarre>



Abschlag (zum Boden)



Aufschlag (zum Himmel)



Das Blues-Schema in A

Blues Schema in A guitar tablature. The piece is in 4/4 time and consists of 13 measures. The notes and chords are as follows:

- Measure 1: A7 (Notes: A2, C3, E3, G3)
- Measure 2: A7 (Notes: A2, C3, E3, G3)
- Measure 3: A7 (Notes: A2, C3, E3, G3)
- Measure 4: A7 (Notes: A2, C3, E3, G3)
- Measure 5: D7 (Notes: D2, F2, A2, C3)
- Measure 6: D7 (Notes: D2, F2, A2, C3)
- Measure 7: A7 (Notes: A2, C3, E3, G3)
- Measure 8: A7 (Notes: A2, C3, E3, G3)
- Measure 9: E7 (Notes: E2, G2, B2, D3)
- Measure 10: D7 (Notes: D2, F2, A2, C3)
- Measure 11: A7 (Notes: A2, C3, E3, G3)
- Measure 12: E7 (Notes: E2, G2, B2, D3)
- Measure 13: A7 (Notes: A2, C3, E3, G3) with a 99x bend on the 13th fret.

Blues Schema in A musical notation. The piece is in 4/4 time and consists of 13 measures. The notes and chords are as follows:

- Measure 1: A7 (Notes: A2, C3, E3, G3)
- Measure 2: A7 (Notes: A2, C3, E3, G3)
- Measure 3: A7 (Notes: A2, C3, E3, G3)
- Measure 4: A7 (Notes: A2, C3, E3, G3)
- Measure 5: D7 (Notes: D2, F2, A2, C3)
- Measure 6: D7 (Notes: D2, F2, A2, C3)
- Measure 7: A7 (Notes: A2, C3, E3, G3)
- Measure 8: A7 (Notes: A2, C3, E3, G3)
- Measure 9: E7 (Notes: E2, G2, B2, D3)
- Measure 10: D7 (Notes: D2, F2, A2, C3)
- Measure 11: A7 (Notes: A2, C3, E3, G3)
- Measure 12: E7 (Notes: E2, G2, B2, D3)
- Measure 13: A7 (Notes: A2, C3, E3, G3) with a 99x bend on the 13th fret.

Blues instruments and a tree diagram. The instruments shown are a harmonica, a drum set, and a foot. The tree diagram illustrates the structure of the Blues Schema in A, showing a root node branching into two nodes, which then branch into four nodes, and finally into 16 leaf nodes representing the notes of the 13 measures.